

# PROVE YOUR ENGLISH PROFICIENCY WITH CELPIP

**CELPIP is the test of choice for immigration and professional designation.**

“ When I took CELPIP, I found it was like speaking English in real life. You speak every day with your boss and with your friends, and the CELPIP represents those every-day, real-life language situations. ”

Rafaela B.



## TEST FEATURES

### Computer-Delivered Test



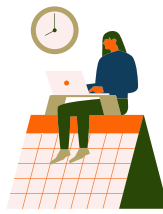
Includes timer, spell check, and word count

### Free Prep Materials



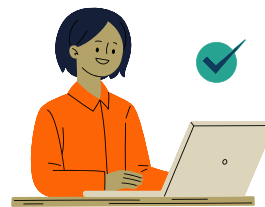
Practice tests, podcasts, webinars, and more

### Scores in 3-4 Days



Available online, official PDF score reports

### Single Test Sitting



Completed in 2 hours and 50 minutes or less

### Everyday English



Easy-to-understand accents and vocabulary

## TEST FORMAT

■ Listening: 46-55 minutes

■ Reading: 43-56 minutes

■ Writing: 53 minutes

■ Speaking: 15 minutes



## ACCEPTANCE

- Designated by the Australian Government's Home Affairs Department of Immigration and Citizenship
- Designated by Immigration, Refugees and Citizenship Canada (IRCC)
- Accepted for professional designations in Canada
- Accepted for the Post-Graduation Work Permit (PGWP) in Canada

# TEST LOCATIONS

**180+  
TEST CENTRES  
WORLDWIDE**

New test centres opening in new areas soon! Find a test sitting near you:  
[celPIP.ca/where-do-we-test](http://celPIP.ca/where-do-we-test)



# TEST SCORING

CELPiP Level	CLB* Level	Test Level Descriptor
12	12	Advanced proficiency in workplace and community contexts
11	11	Advanced proficiency in workplace and community contexts
10	10	Highly effective proficiency in workplace and community contexts
9	9	Effective proficiency in workplace and community contexts
8	8	Good proficiency in workplace and community contexts
7	7	Adequate proficiency in workplace and community contexts
6	6	Developing proficiency in workplace and community contexts
5	5	Acquiring proficiency in workplace and community contexts
4	4	Adequate proficiency for daily life activities
3	3	Some proficiency in limited contexts of personal relevance
2	1, 2	Limited ability in contexts related to immediate needs
1	/	Insufficient information to assess
0	/	Insufficient information to assess
NA	/	Not Administered: test taker did not receive this test component

\*CLB - Canadian Language Benchmarks

# CONTACT US

For all questions about CELPiP, contact [info@celPIP.ca](mailto:info@celPIP.ca) or find more information on our website, [celPIP.ca](http://celPIP.ca).

Follow @CELPiPTest     
Email [info@celPIP.ca](mailto:info@celPIP.ca)  
Call toll-free: 1-800-958-5186

